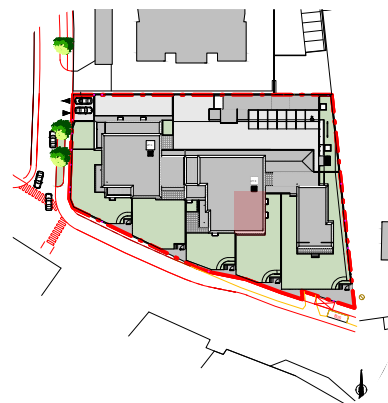
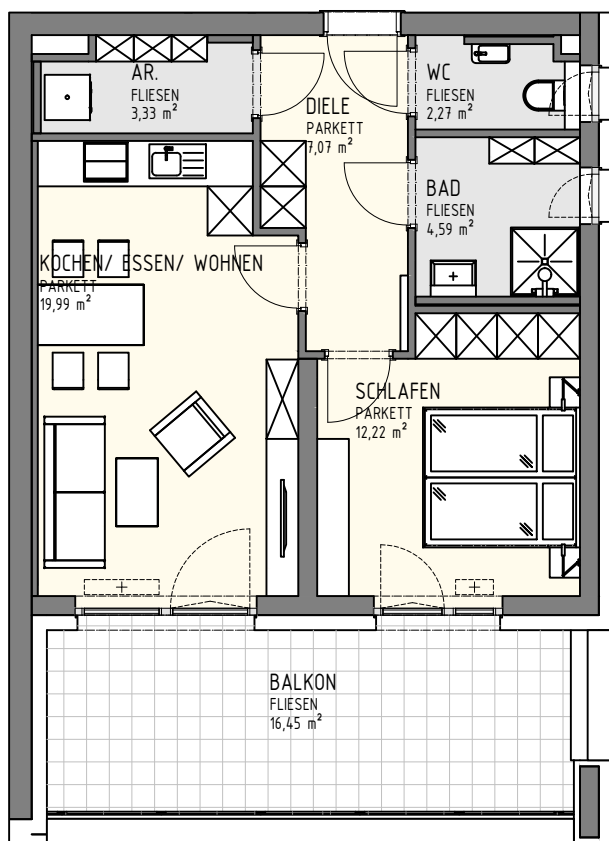


# TOP B06

Wohnnutzfläche 49,47 m<sup>2</sup>  
 Balkon 16,45 m<sup>2</sup>  
 Keller 7,62 m<sup>2</sup>



EINGANG  
TOP B06



WOHNPARK WERNER-KOFLER STRASSE BST II

TOP B06 1.OBERGESCHOSS HAUS B

