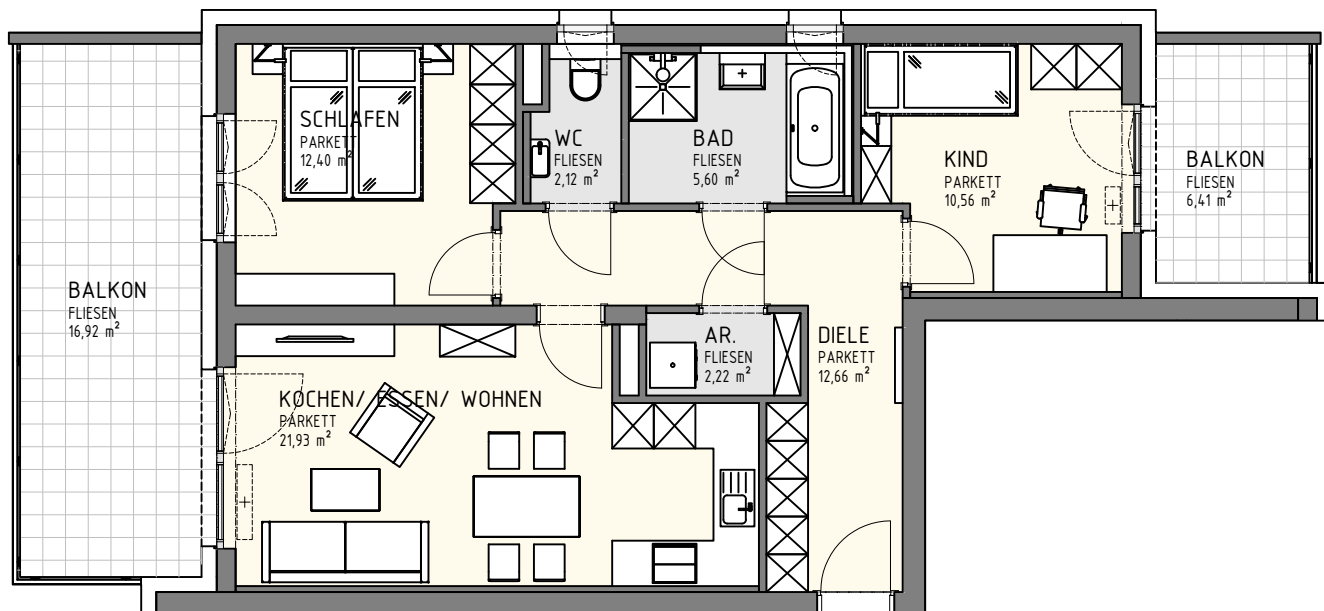
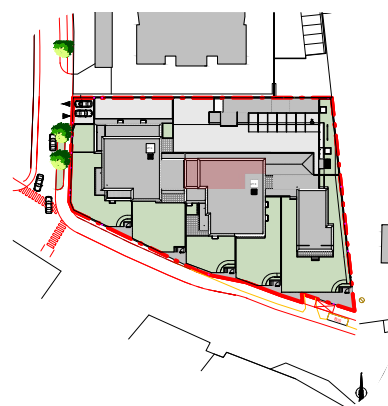


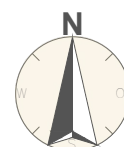
# TOP B10

Wohnnutzfläche 67,49 m<sup>2</sup>  
Balkon 23,33 m<sup>2</sup>  
Keller 3,46 m<sup>2</sup>



▲  
EINGANG  
TOP B10

TOP B10 3.OBERGESCHOSS HAUS B



WOHNPAK WERNER-KOFLER STRASSE BST II